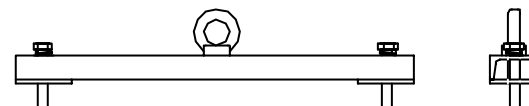
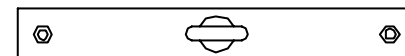
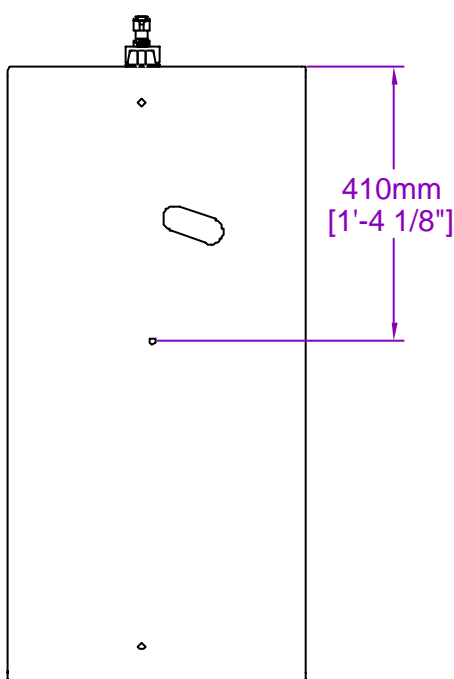
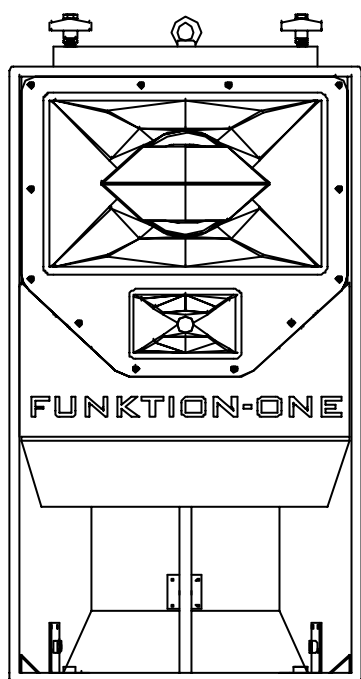
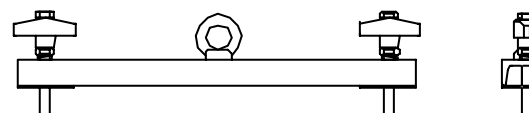


Single flybar allows one R2 to be suspended from a single point. Tilting and directional control can be affected using lines to the lower side fixing points.

The central eyebolt could be replaced with a hook clamp (HC2, not included) to attach directly to truss.



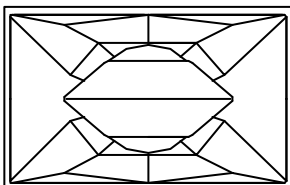
Flybar shown fitted with M10 bolts and lockwashers for installation (FB21-K1)



Flybar shown with optional M10 T-Bolts and lockwashers (HT210) for applications where frequent re-assembly is required (FB21-K2)

All dimensions in mm and inches

Copyright Funktion-One Research Ltd



FUNKTION-ONE

Hoyle, Horsham Road, Beare Green, Dorking, Surrey, RH5 4PS, England

Phone: +44 (0)1306 712820

Fax: +44 (0)1306 711240



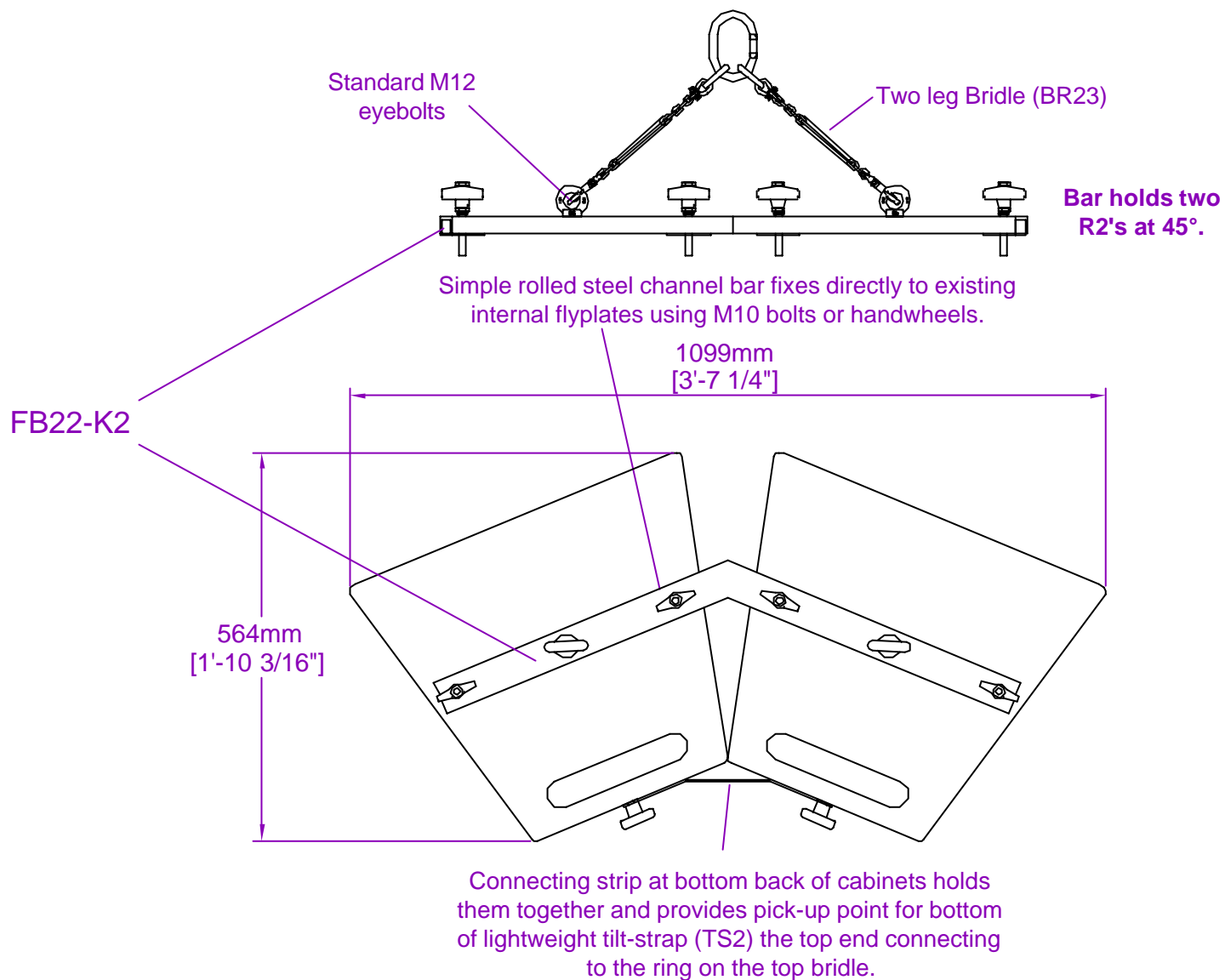
mail@funktion-one.com

www.funktion-one.com

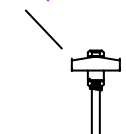
Accessories for: Resolution 2

FB21-K1 - R2 Flybar, 1 wide (c/w top eyebolt and bolts to attach to R2)

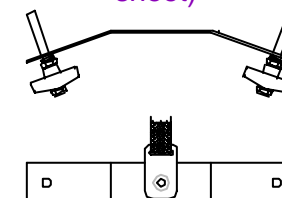
FB21-K2 - R2 Flybar, 1 wide (c/w top eyebolt and HT210 T-bolts to attach to R2)



HT210 (see separate sheet)

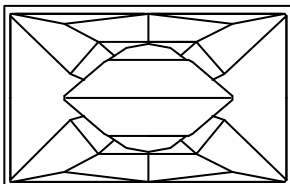


Rear Joiner kit (JP2-K2, see separate sheet)



All dimensions in mm and inches

Copyright Funktion-One Research Ltd



FUNKTION-ONE

Hoyle, Horsham Road, Beare Green, Dorking, Surrey, RH5 4PS, England

Phone: +44 (0)1306 712820

Fax: +44 (0)1306 711240



mail@funktion-one.com

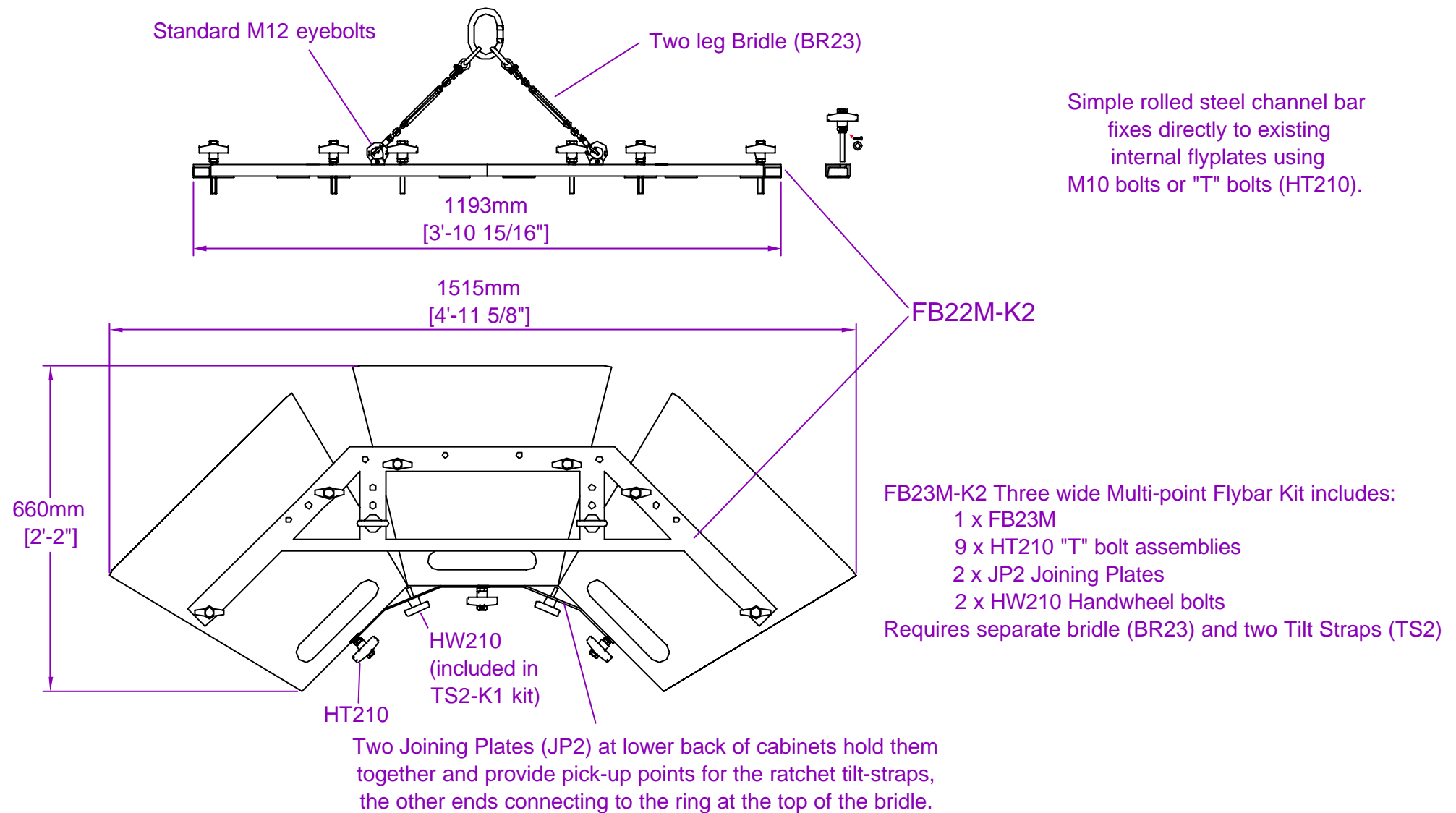
www.funktion-one.com

Accessories for: Resolution 2

FB22 - R2 Flybar, 2 wide

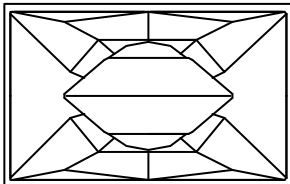
FB22-K1 - R2 Flybar, 2 wide (c/w top eyebolts, rear joiner and bolts to attach to R2) needs separate bridle and strap

FB22-K2 - R2 Flybar, 2 wide (c/w top eyebolts, rear joiner and HT210 T-Bolts to attach to R2) needs separate bridle and strap



All dimensions in mm and inches

Copyright Funktion-One Research Ltd



FUNKTION-ONE

Hoyle, Horsham Road, Beare Green, Dorking, Surrey, RH5 4PS, England

Phone: +44 (0)1306 712820

Fax: +44 (0)1306 711240



mail@funktion-one.com

www.funktion-one.com

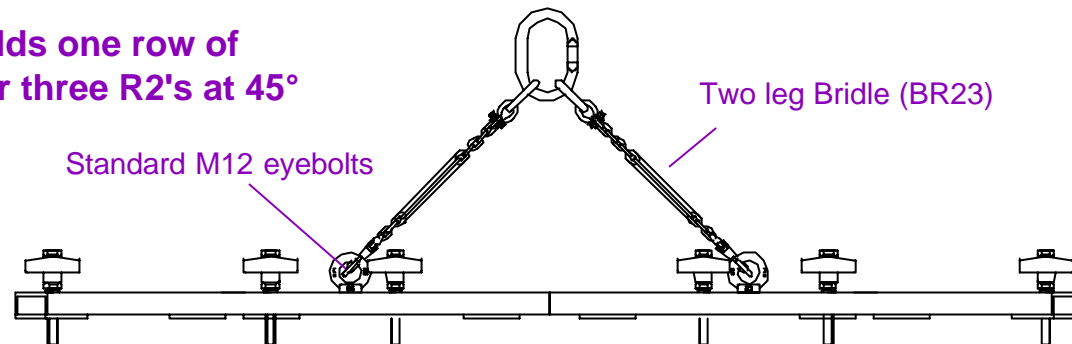
Accessories for: Resolution 2

FB23M - R2 Flybar, 2/3 wide with eyebolts (bar only)

FB23M-K1 - R2 Flybar, 2/3 wide (c/w top eyebolts, rear joiners and bolts to attach to R2) needs separate bridle and strap

FB23M-K2 - R2 Flybar, 2/3 wide (c/w top eyebolts, rear joiners and HT210 T-bolts to attach to R2) needs separate bridle and strap

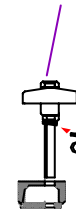
Bar holds one row of
one, two or three R2's at 45°



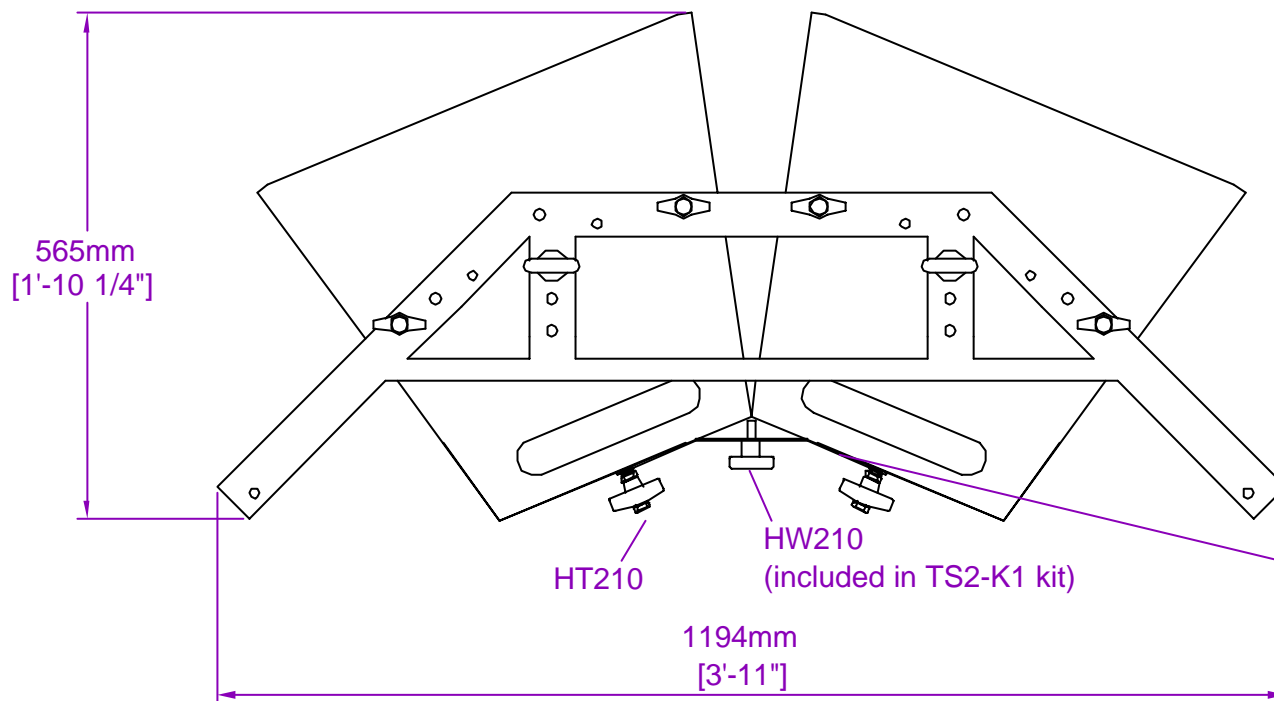
Standard M12 eyebolts

Two leg Bridle (BR23)

HT210 (see separate sheet)



Rolled steel channel bar
fixes directly to existing
internal flyplates using
M10 bolts or "T" bolts (HT210).



565mm
[1'-10 1/4"]

1194mm
[3'-11"]

HT210

HW210
(included in TS2-K1 kit)

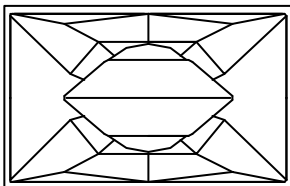
To fly Two wide on **each** Flybar you need:

- 1 x FB23M
- 6 x HT210 "T" bolt assemblies
- 1 x JP2 Joining Plate
- 1 x HW210 Handwheel bolt
- 1 x BR23 Bridle
- 1 x TS2 Tilt Strap

A Joining Plate (JP2) at lower back of cabinets holds them together and provides pick-up points for the ratchet tilt-strap, the other end connecting to the ring at the top of the bridle.

All dimensions in mm and inches

Copyright Funktion-One Research Ltd



FUNKTION-ONE

Hoyle, Horsham Road, Beare Green, Dorking, Surrey, RH5 4PS, England

Phone: +44 (0)1306 712820

Fax: +44 (0)1306 711240



mail@funktion-one.com

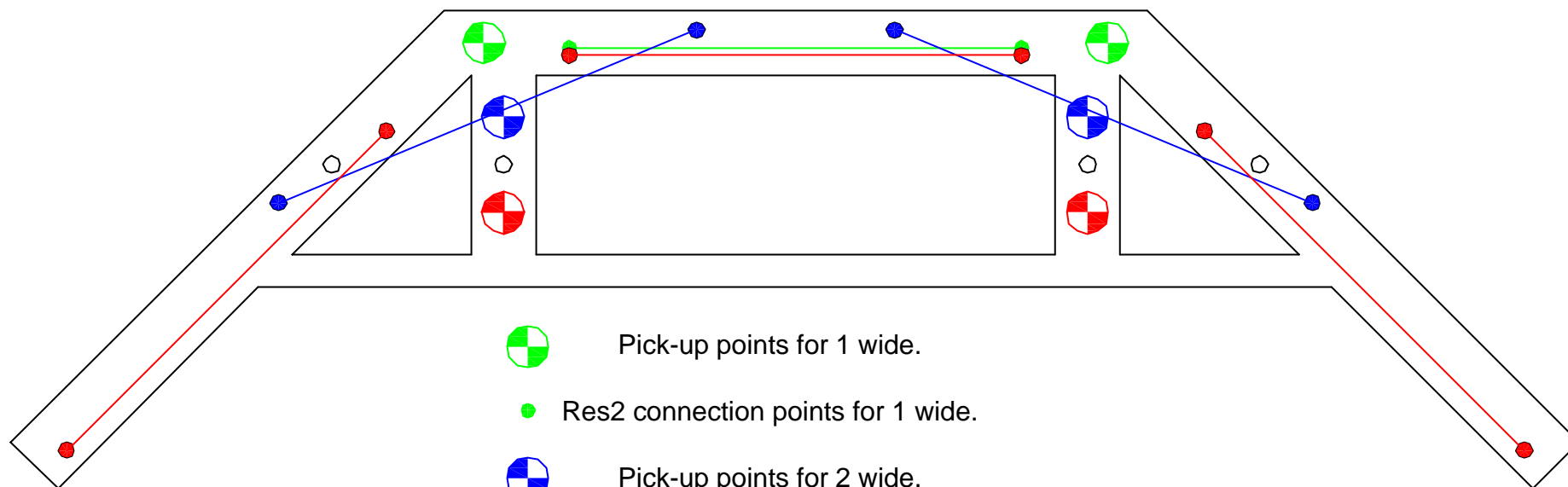
www.funktion-one.com

Accessories for: Resolution 2

FB23M - R2 Flybar, 2/3 wide with eyebolts (bar only)

FB23M-K1 - R2 Flybar, 2/3 wide (c/w top eyebolts, rear joiners and bolts to attach to R2) needs separate bridle and strap

FB23M-K2 - R2 Flybar, 2/3 wide (c/w top eyebolts, rear joiners and HT210 T-bolts to attach to R2) needs separate bridle and strap



Pick-up points for 1 wide.



Res2 connection points for 1 wide.



Pick-up points for 2 wide.



Res2 connection points for 2 wide.



Pick-up points for 3 wide.



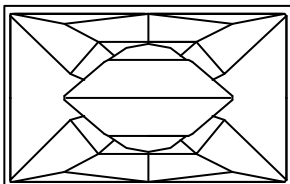
Res2 connection point for 3 wide.



Alternative pick-up points
or safety points
(use points just in front of normal
ones to start with an upward tilt).

All dimensions in mm and inches

Copyright Funktion-One Research Ltd



FUNKTION-ONE

Hoyle, Horsham Road, Beare Green, Dorking, Surrey, RH5 4PS, England

Phone: +44 (0)1306 712820

Fax: +44 (0)1306 711240



mail@funktion-one.com

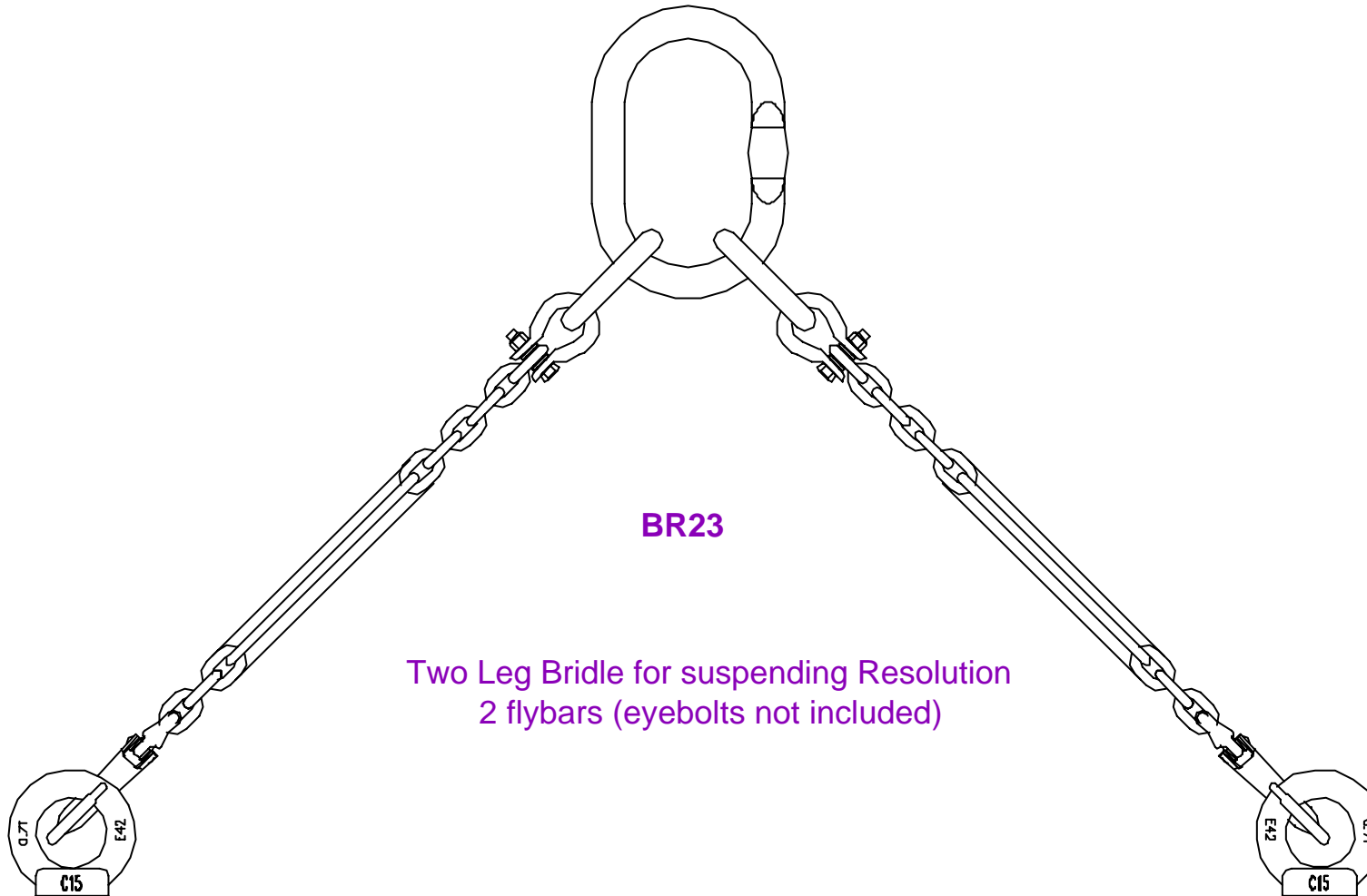
www.funktion-one.com

Accessories for: Resolution 2

FB23M - R2 Flybar, 2/3 wide with eyebolts (bar only)

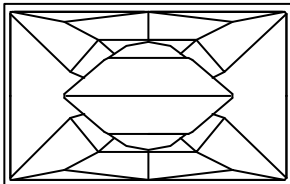
FB23M-K1 - R2 Flybar, 2/3 wide (c/w top eyebolts, rear joiners and bolts to attach to R2) needs separate bridle and strap

FB23M-K2 - R2 Flybar, 2/3 wide (c/w top eyebolts, rear joiners and HT210 T-bolts to attach to R2) needs separate bridle and strap



All dimensions in mm and inches

Copyright Funktion-One Research Ltd



FUNKTION-ONE

Hoyle, Horsham Road, Beare Green, Dorking, Surrey, RH5 4PS, England

Phone: +44 (0)1306 712820

Fax: +44 (0)1306 711240



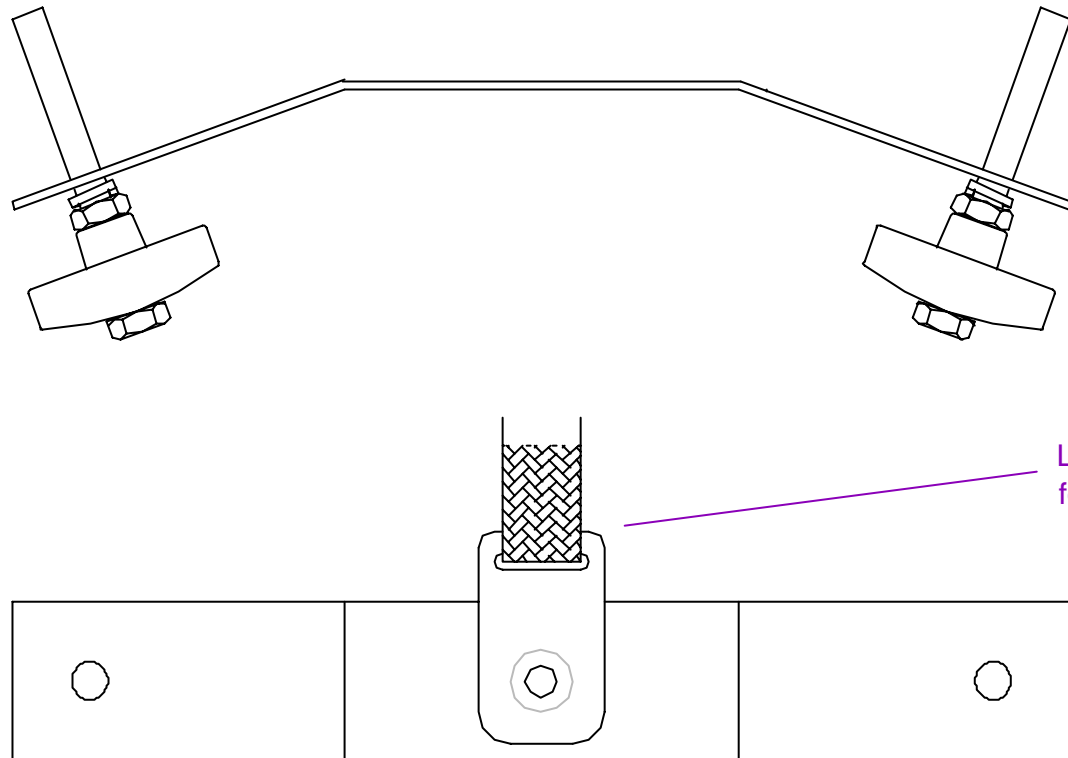
mail@funktion-one.com

www.funktion-one.com

Accessories for: Resolution 2

BR23 - Two Leg Bridle

A Joining Plate (JP2) at lower back of cabinets holds them together
and provides pick-up points for the ratchet tilt-strap,
the other end connecting to the ring at the top of the bridle.

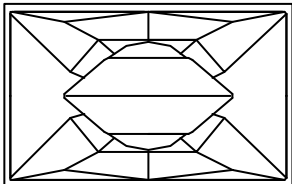


JP2-K2 shown here

Lower end of TS2 / TS2-K1 Tilt Straps
for flying system

All dimensions in mm and inches

Copyright Funktion-One Research Ltd



FUNKTION-ONE

Hoyle, Horsham Road, Beare Green, Dorking, Surrey, RH5 4PS, England

Phone: +44 (0)1306 712820

Fax: +44 (0)1306 711240



mail@funktion-one.com

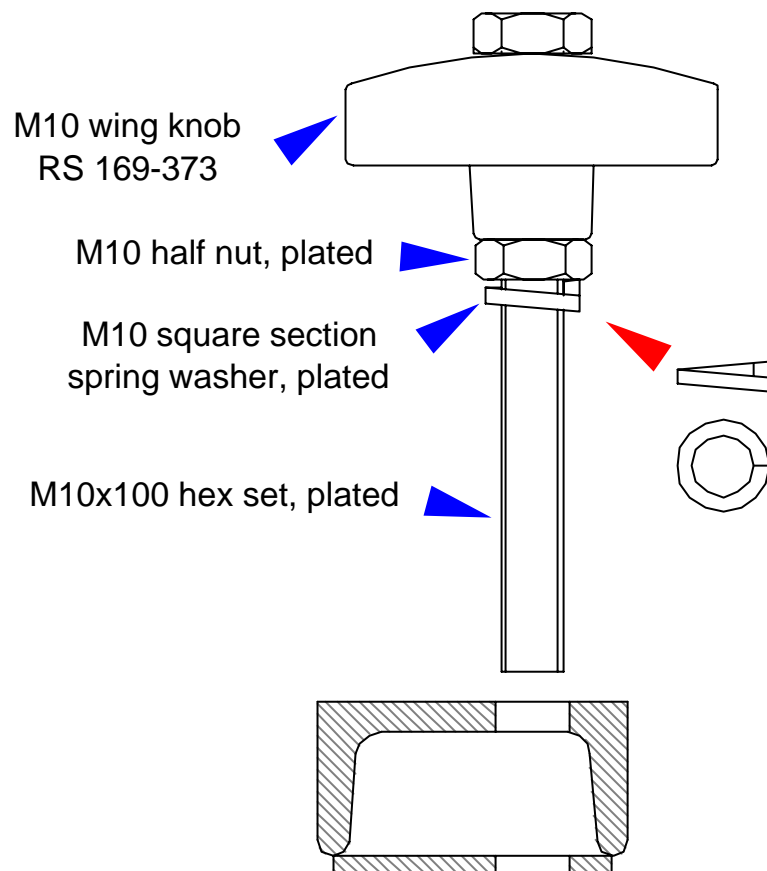
www.funktion-one.com

Accessories for: Resolution 2

JP2-K1 - Back joiner for pair of R2s (Black) - including bolts to attach to R2

JP2-K2 - Back joiner for pair of R2s (Black) - including HT210 T-Bolt
assemblies to attach to R2

TS2 - Tilt Strap for R2 flying system(one required fro 2 enclosures - picks up
from JP2). TS2-K1 - includes handwheel knob to attach to JP2



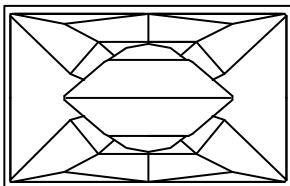
Resolution 2 direct fitting flybars.

Fitting spring washers supplied in this position will increase security of bolts*. If loudspeaker enclosures, or anything else, are to be suspended over an area where people have access then safety attachments should always be used.

* After some while the springs will become permanently "flat" and should be replaced. These are for M10 bolts. Some 3/8" versions will also fit.

All dimensions in mm and inches

Copyright Funktion-One Research Ltd



FUNKTION-ONE

Hoyle, Horsham Road, Beare Green, Dorking, Surrey, RH5 4PS, England

Phone: +44 (0)1306 712820

Fax: +44 (0)1306 711240



mail@funktion-one.com

www.funktion-one.com

Accessories for: Resolution 2

HT210 - T-Bolt assembly (M10)